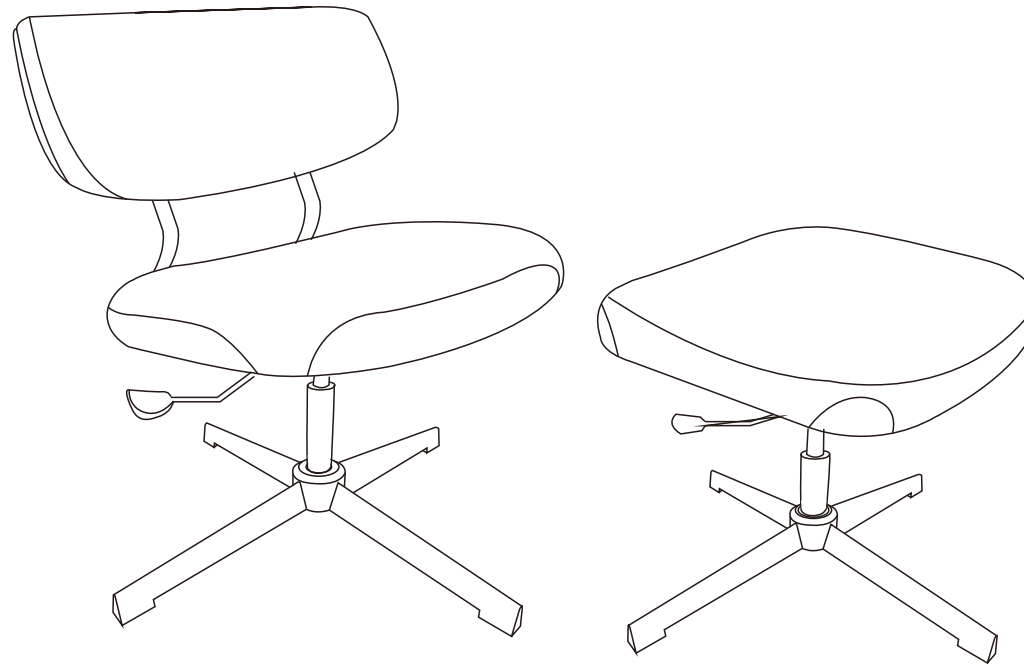


# LEISURE CHAIR

## Assembly Instruction

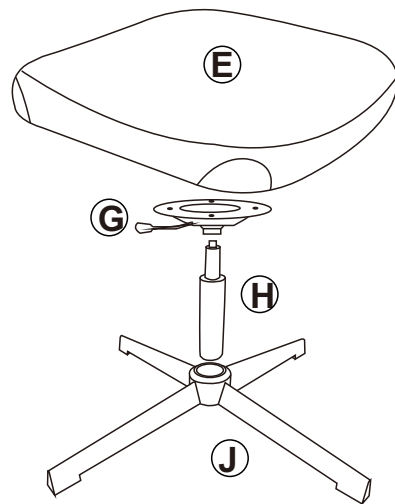
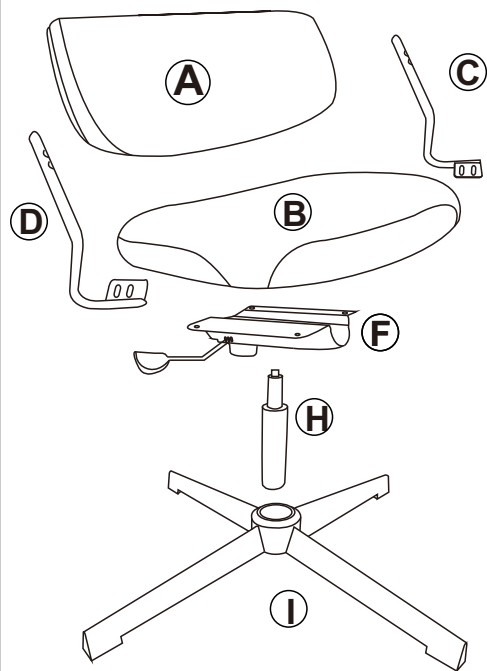


Any question please feel free to contact us ;  
support@amer-life.com TEL ; 901-347-2181  
We will provide further assistance within 24 hours .

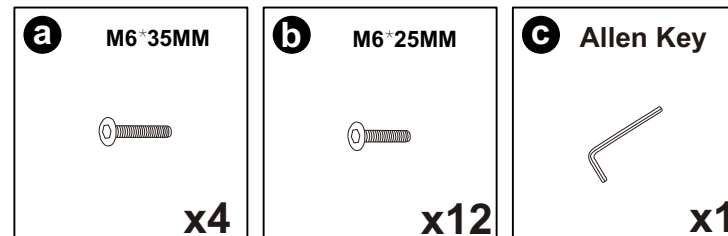
**Dear Customers,**

Thank you for purchasing our product. Please read this instruction manual carefully after receiving this product. It will help you assemble this product quickly, safely and correctly. You can keep this manual for future reference.

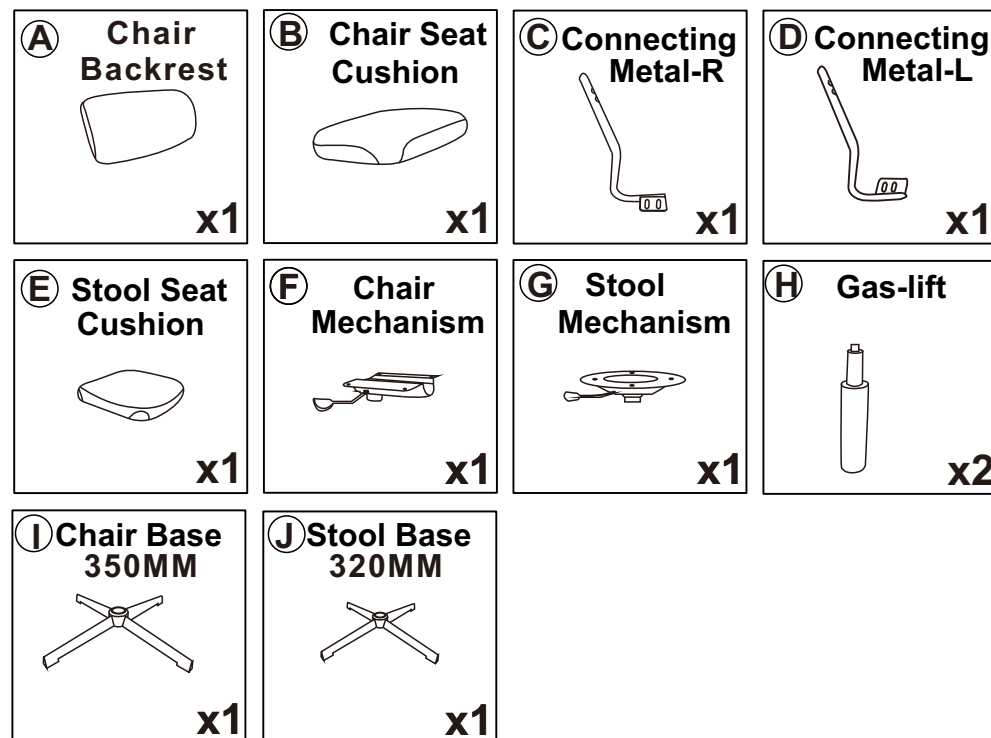
# CHAIR



## Hardware parts



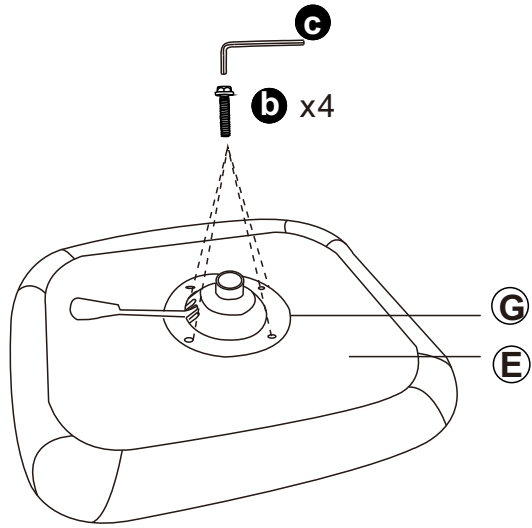
## Main structure accessories



# Kind Reminder:

Due to the size of our product, it would be easier to assemble it with your partner together.

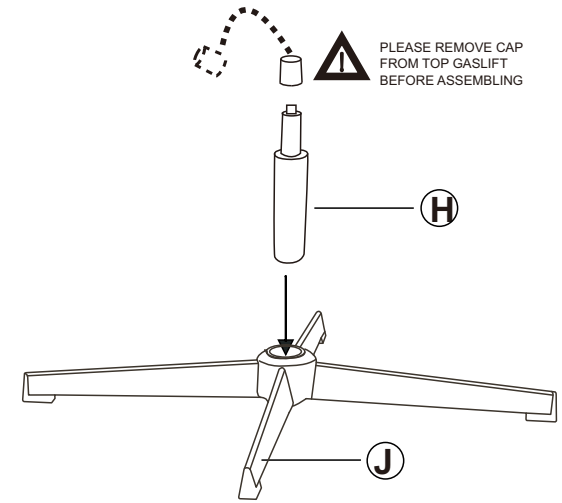
## STEP 1 Stool Assembly



**b** x4

**c** x1

## STEP 2

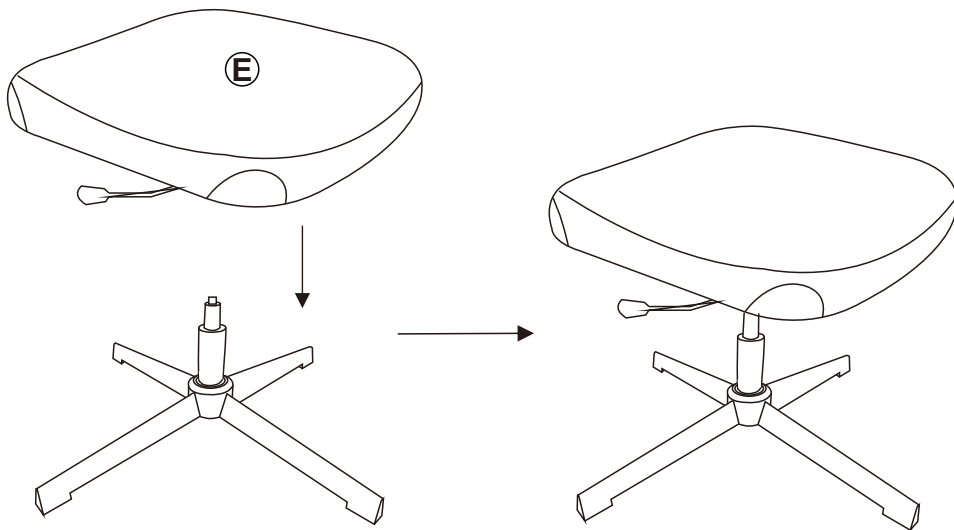


PLEASE REMOVE CAP  
FROM TOP GASLIFT  
BEFORE ASSEMBLING

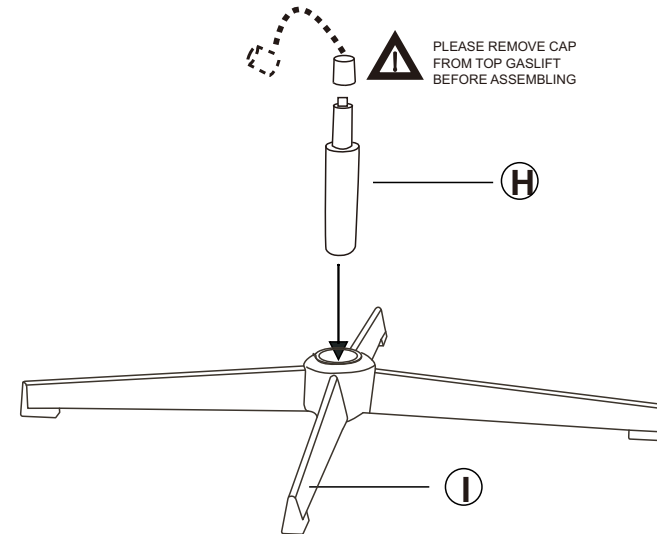
### Note:

Please kindly note that the cap should be removed from the top of the gaslift before assembling.

## STEP 3



## STEP 4 Chair Assembly

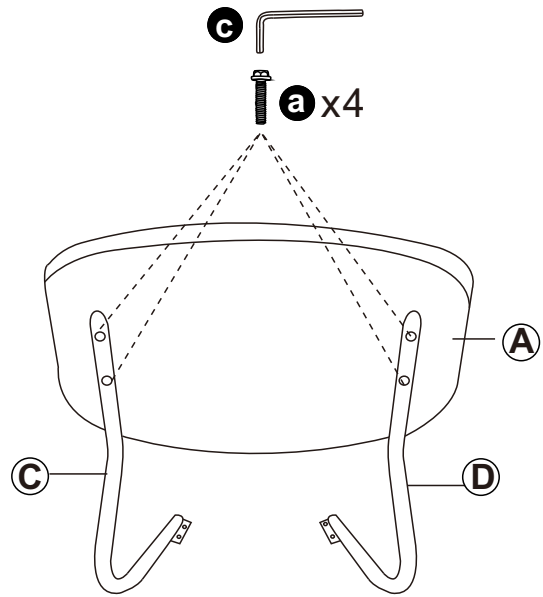


PLEASE REMOVE CAP  
FROM TOP GASLIFT  
BEFORE ASSEMBLING

### Note:

Please kindly note that the cap should be removed from the top of the gaslift before assembling.

## STEP 5

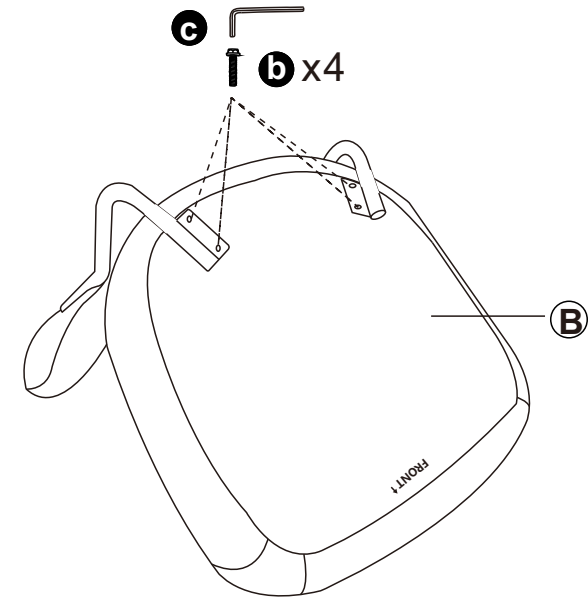


### Note:

Screwing all the **a** on the chair (tighten 50% of screws first), and then tighten 100% of all screws. It might help you assemble more easily.

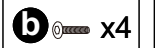


## STEP 6

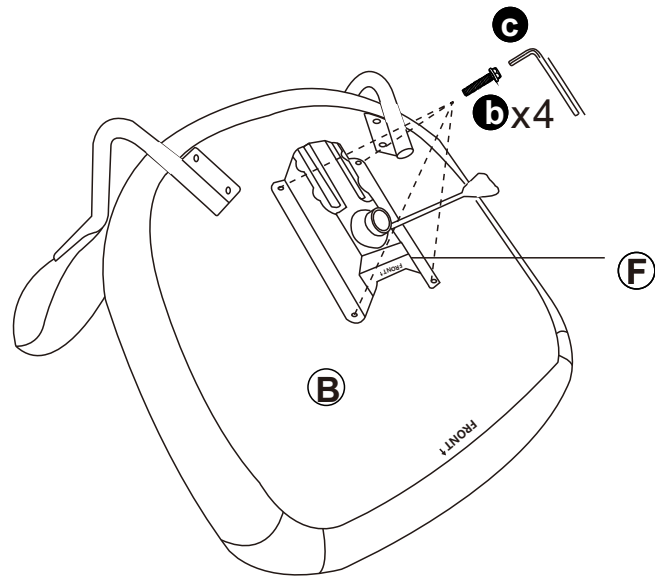


### Note:

Screwing all the **b** on the chair (tighten 50% of screws first), and then tighten 100% of all screws. It might help you assemble more easily.



## STEP 7

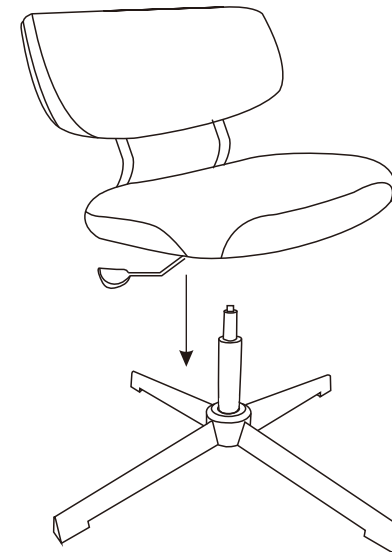


### Note:

Make sure the "FRONT" direction of Mechanism (F) and Seat Cushion (B) are the same.



## STEP 8



### Note:

Before using the chair, please kindly check all screws are fully tightened.

**STEP 9**

